

ACTON/WEST BASIN • CANBERRA
CULTURAL HERITAGE STUDY
AUGUST 1993

FREEMAN COLLETT & PARTNERS
MALCOLM MUNRO & ASSOCIATES
ROGER HOBBS • VIVID HISTORIES

Illustrated Chronology

THE DEVELOPMENT PERIOD

1958 to Present



Figure 1
The new wing to Bennett House (right)
completed 1956
Source:
Jean Bennett in Newman et al, *Royal Canberra
Hospital*

SITE PLANS

NEW HOSPITAL 1943-1963. ACTON PENINSULA SITE

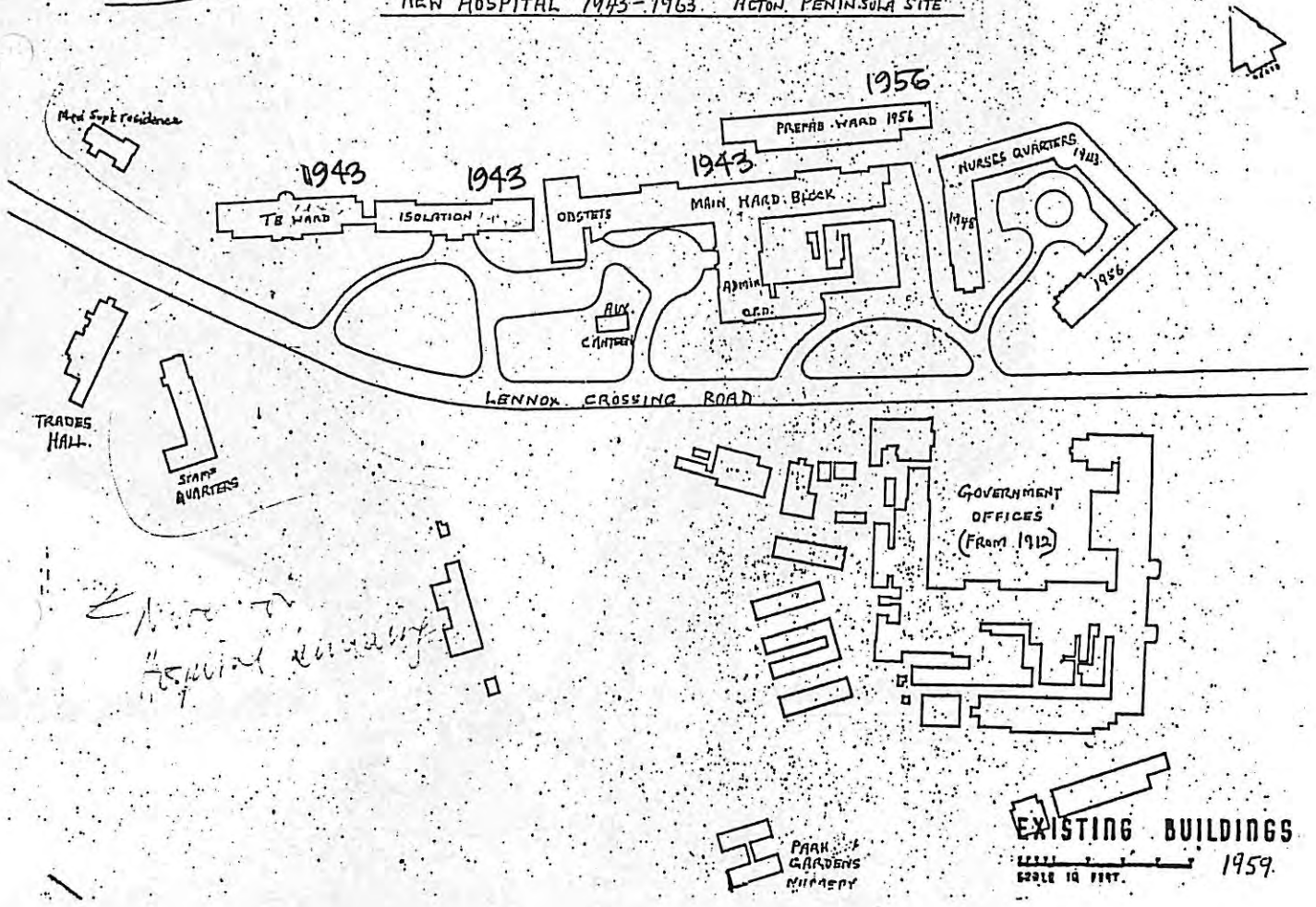


Figure 2
 Existing buildings and their dates, Royal
 Canberra Hospital, 1959
 Source:
 C Brackenreg, Canberra

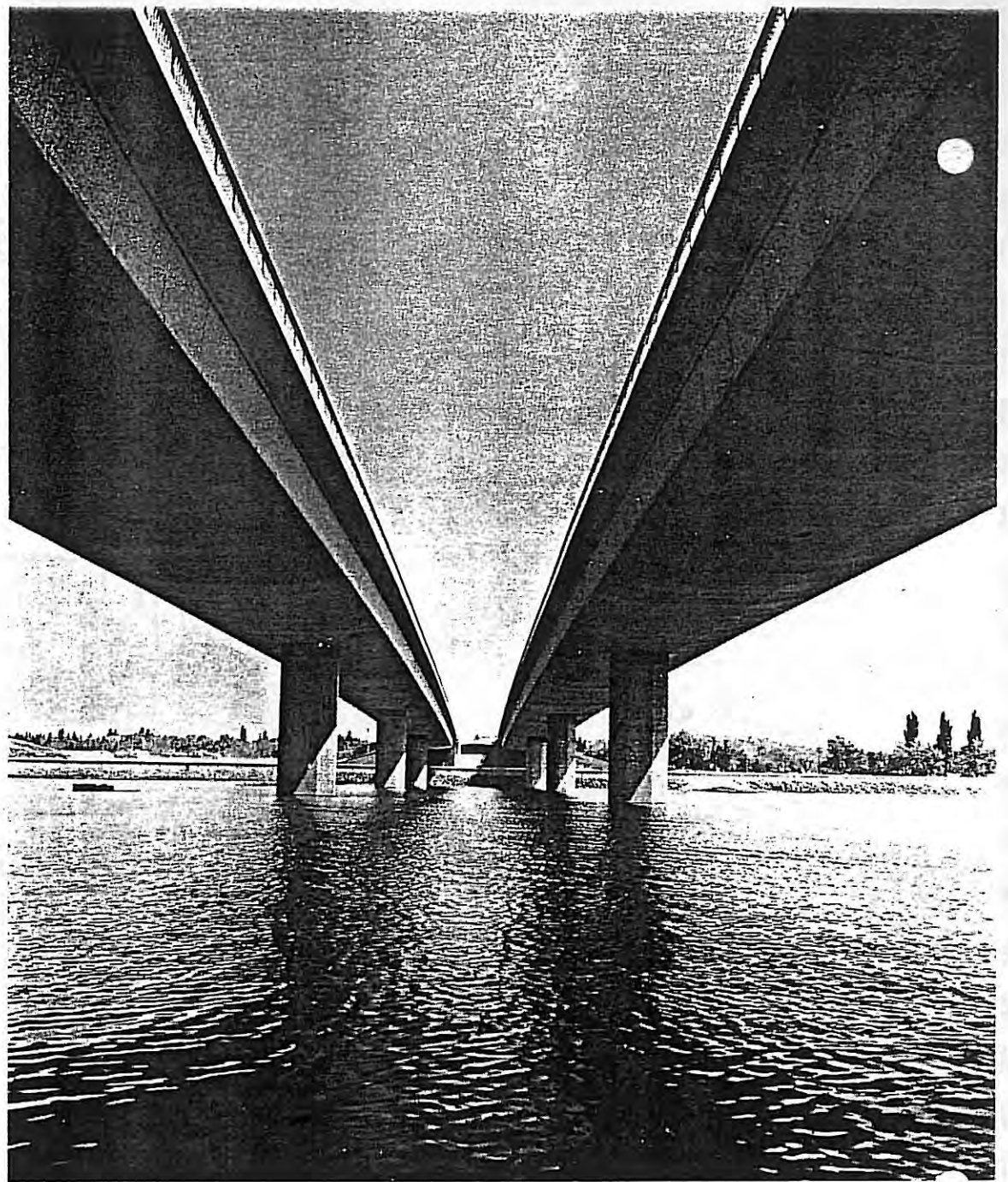


Figure 3
The present (and fourth) Commonwealth Avenue
Bridge, 1965.

Source:
Australian Information Service

The to the Northern approaches were created
using excavated fill from the West Basin.



Figure 4
The former Acton Offices, used by Canberra
Community Hospital as Geriatric wards, 1965
Source:
'Canberra Times' in Newman et al, *Royal
Canberra Hospital*, 1993

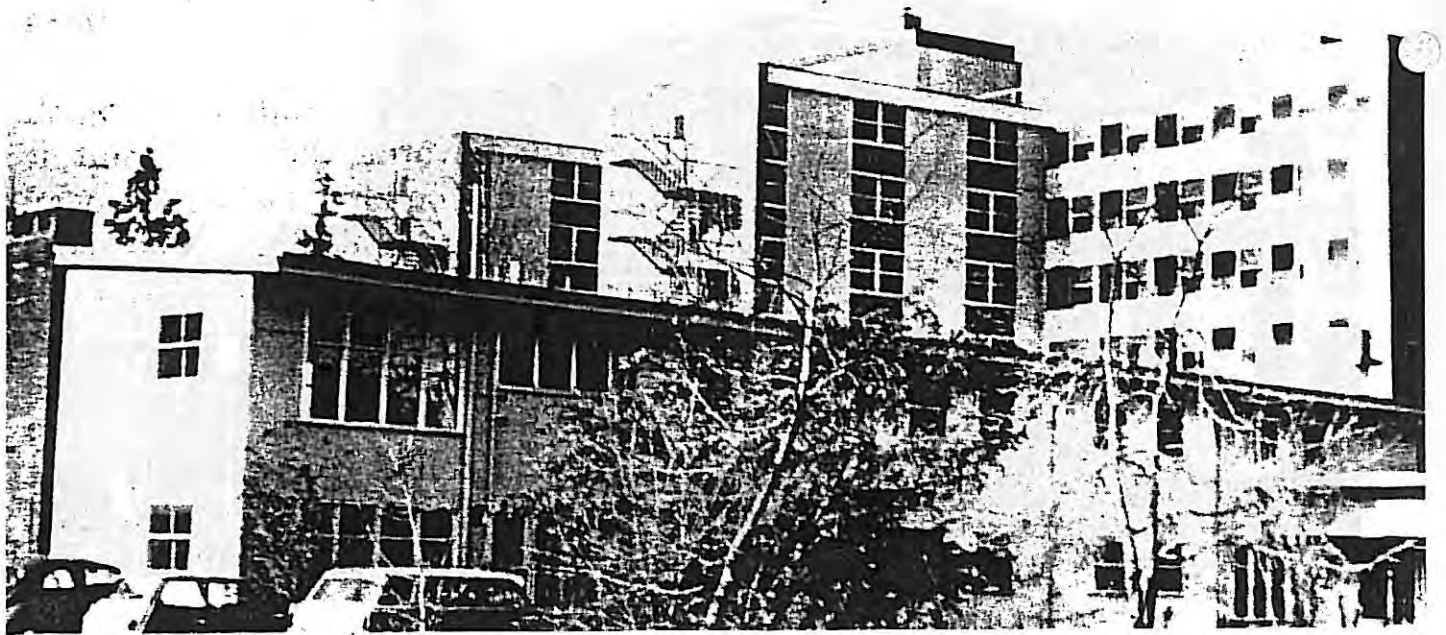
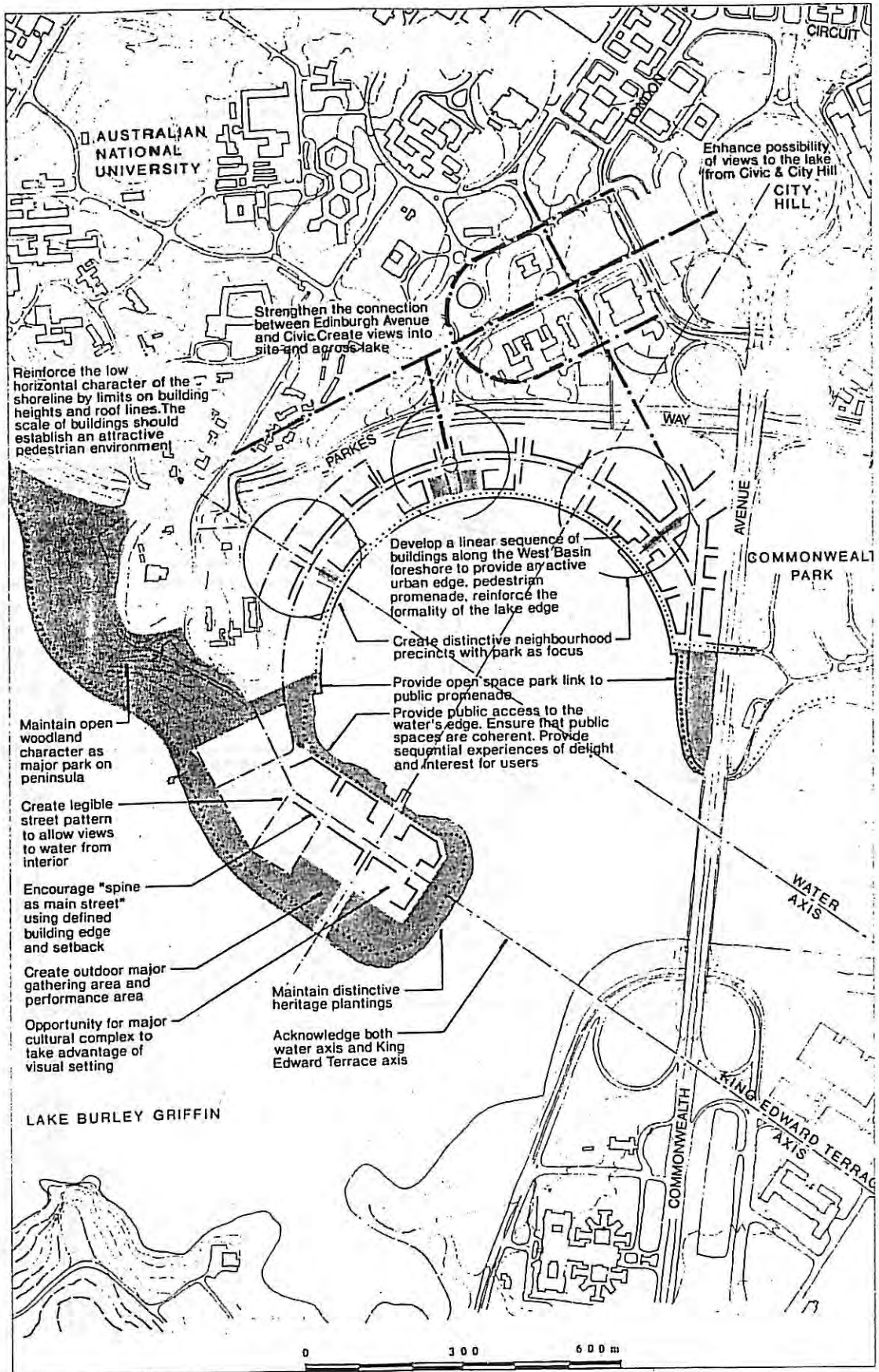


Figure 5
The old prefab Nurses' Home before its removal
to the Australian Forestry School, 1965
Source:
'Canberra Times' in Newman et al, *Royal
Canberra Hospital*, 1993



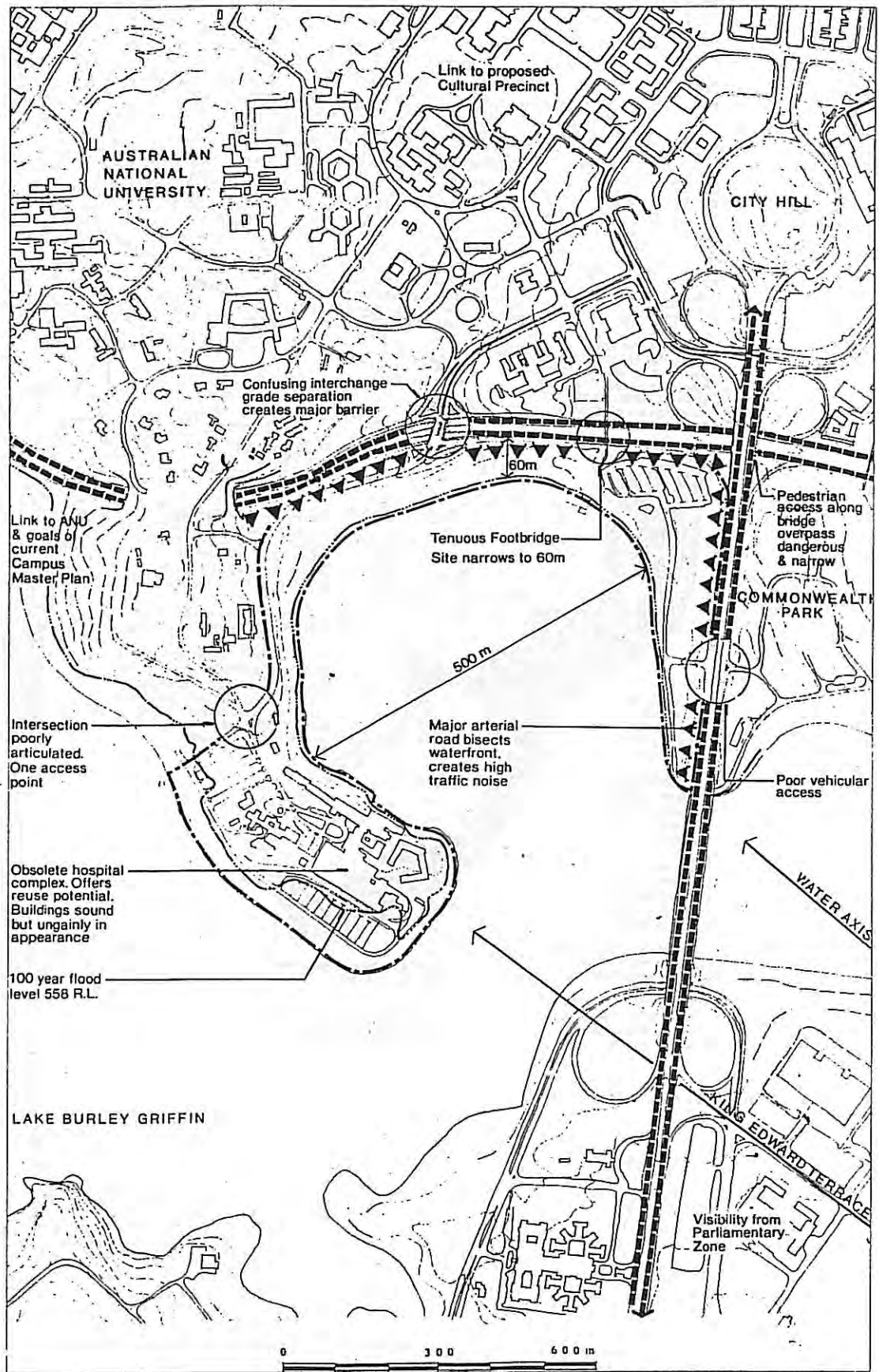
PRINCIPLES OF BUILT FORM



1992

Figure 6
 'Principles of Built Form', from NCPA/ACTPA
 Workshop, 1992

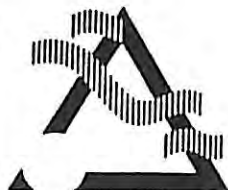
Source:
Where the City Meets the Lake, 1992



SITE ISSUES

1992

Figure 7
 'Site Issues', from NCPA / ACTPA Workshop,
 1992
 Source:
Where the City Meets the Lake, 1992



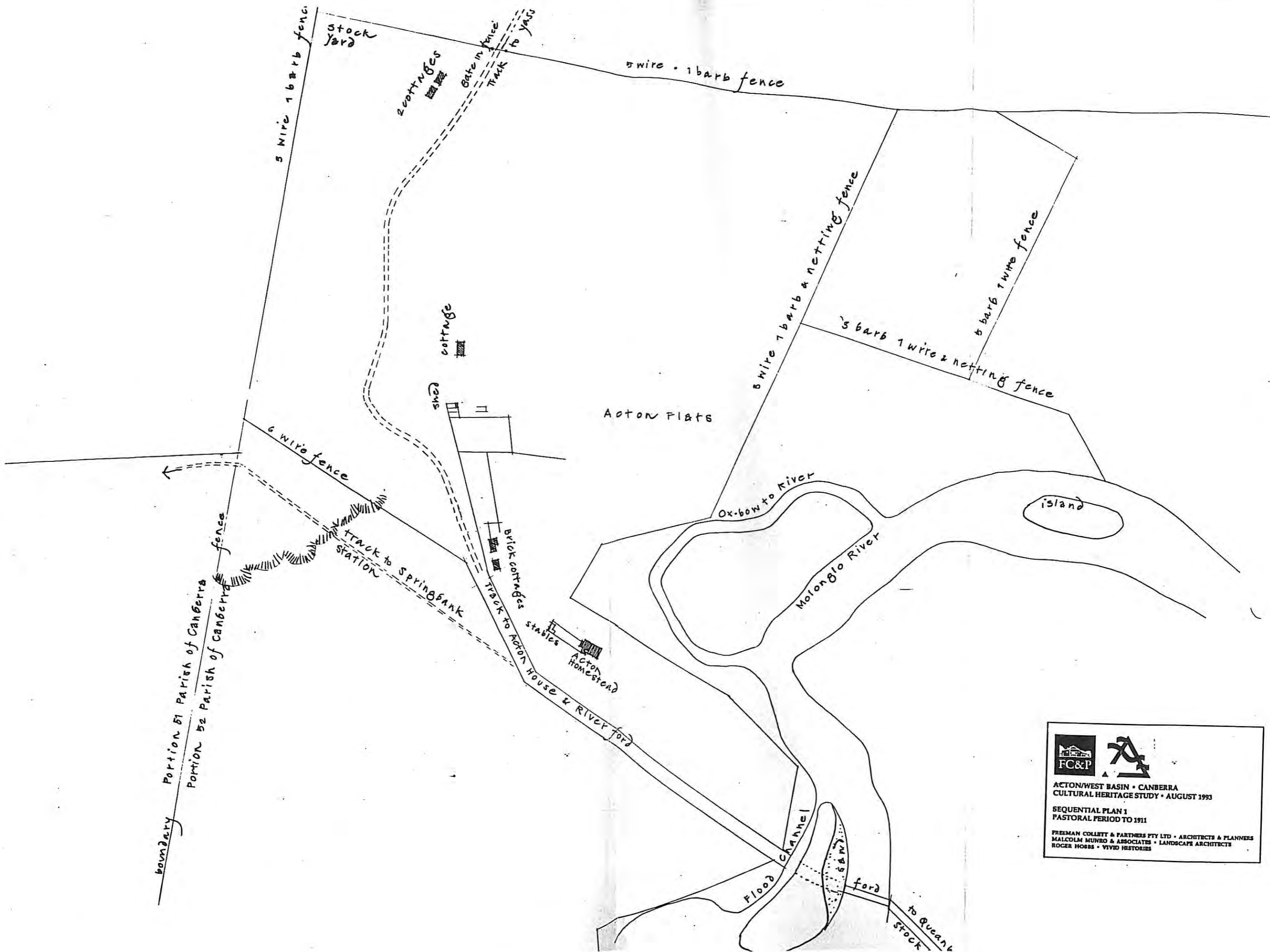
ACTON/WEST BASIN • CANBERRA
CULTURAL HERITAGE STUDY
AUGUST 1993

FREEMAN COLLETT & PARTNERS
MALCOLM MUNRO & ASSOCIATES
ROGER HOBBS • VIVID HISTORIES

ACTON/WEST BASIN CULTURAL HERITAGE STUDY

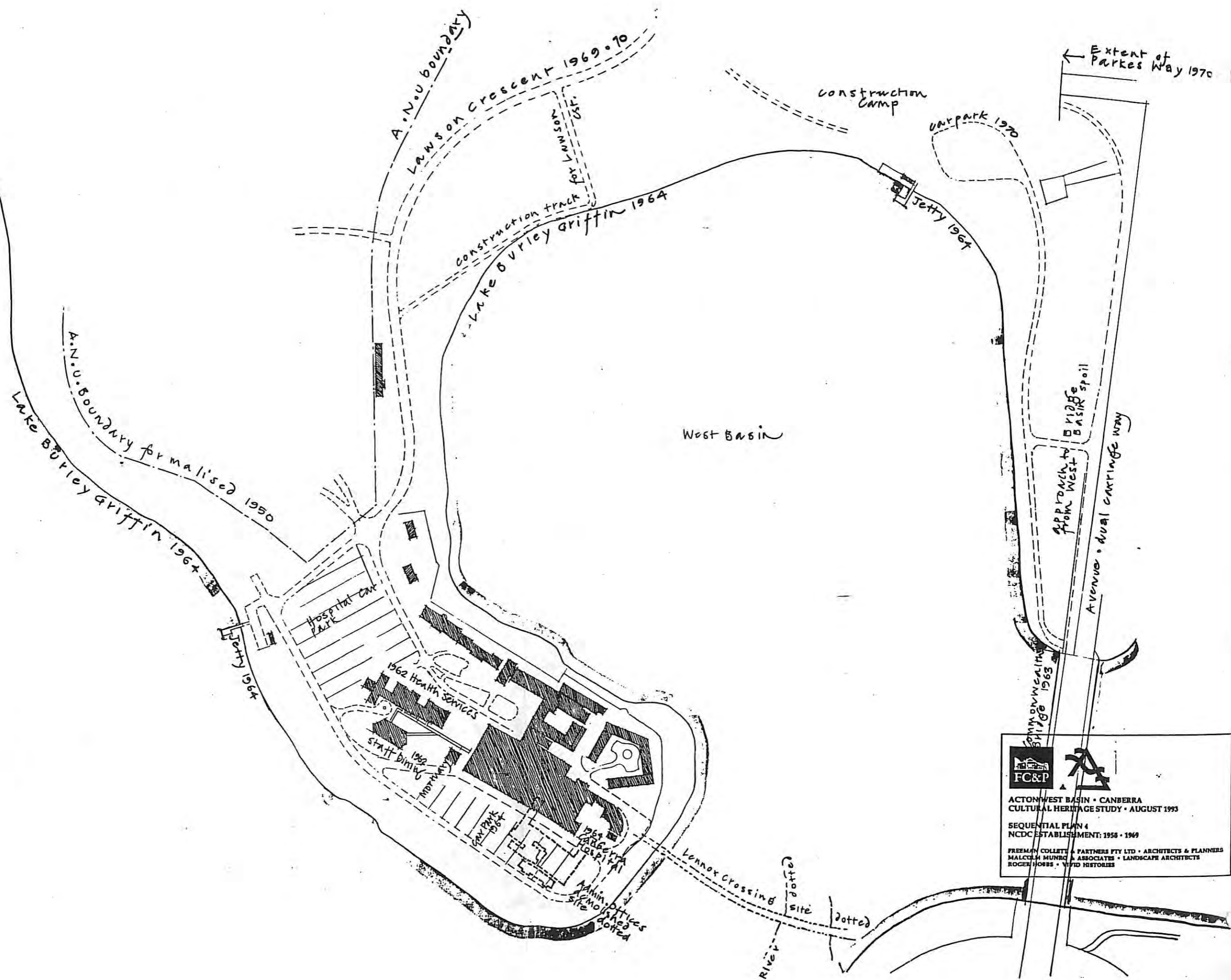
Sequential Site Plans

1. Pastoral Period to 1911
2. Early Federal Capital 1912 - 1939
3. Department of the Interior 1940 - 1958
4. NCDC Establishment 1958 - 1969
5. NCDC Development 1970 - 1979
6. NCDC / NCPA 1980 - Present






ACTON/WEST BASIN • CANBERRA
CULTURAL HERITAGE STUDY • AUGUST 1993
SEQUENTIAL PLAN 1
PASTORAL PERIOD TO 1911
 FREEMAN COLLETT & PARTNERS PTY LTD • ARCHITECTS & PLANNERS
 MALCOLM MUNRO & ASSOCIATES • LANDSCAPE ARCHITECTS
 ROGER HOBS • VIVID HISTORIES

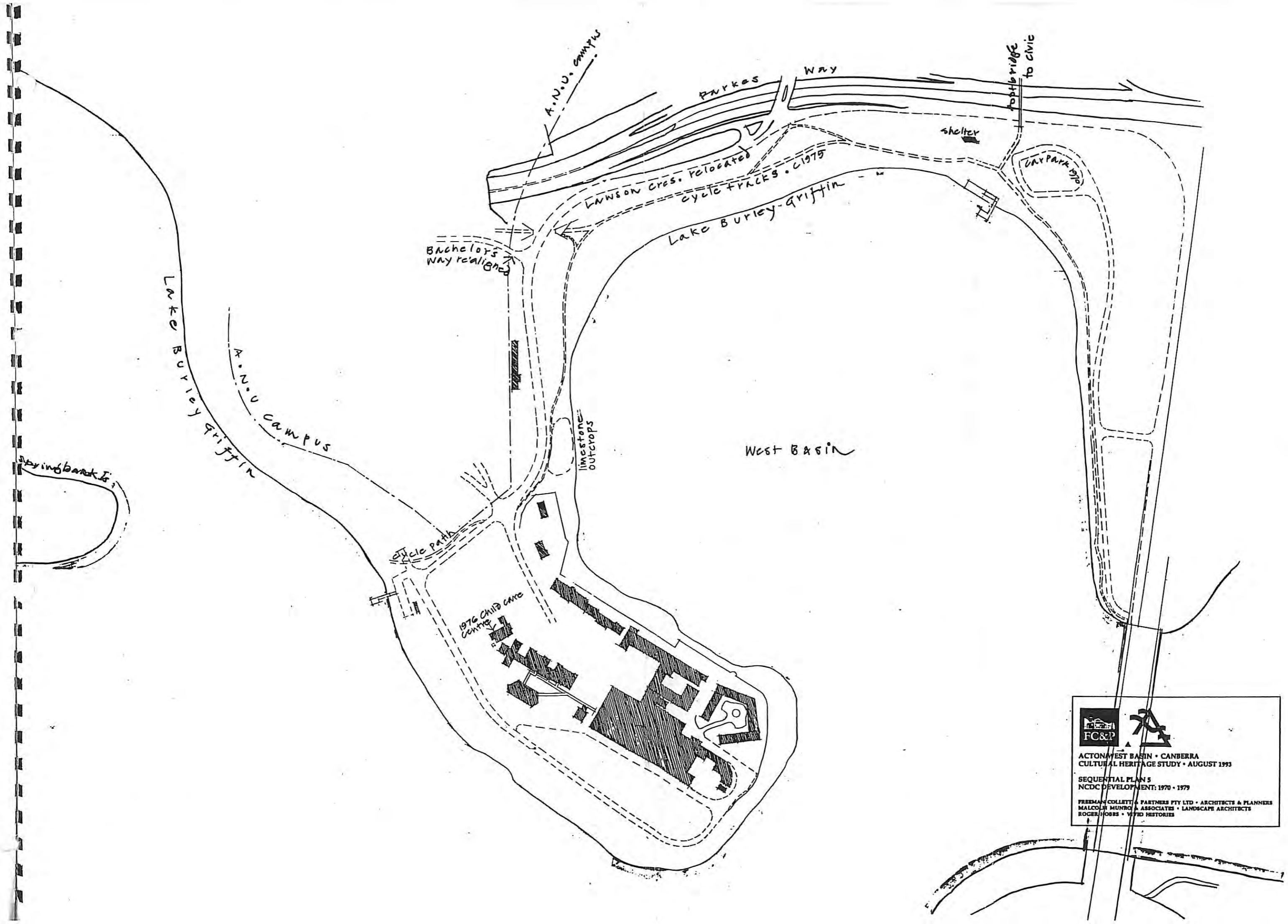


FC&P

ACTON WEST BASIN • CANBERRA
CULTURAL HERITAGE STUDY • AUGUST 1993

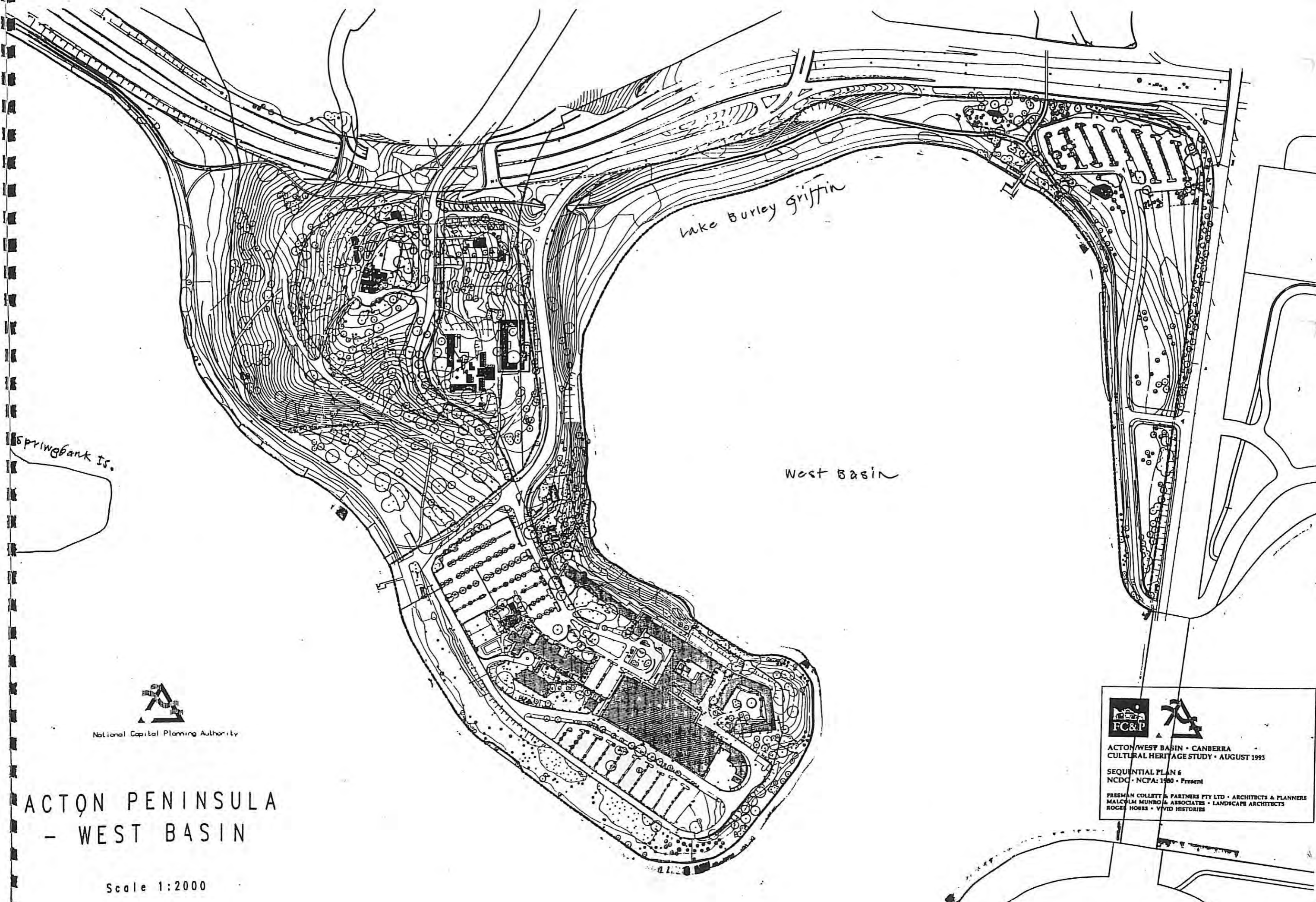
SEQUENTIAL PLAN 4
NCDC ESTABLISHMENT: 1958 - 1969

FREEMAN COLLETT & PARTNERS PTY LTD • ARCHITECTS & PLANNERS
MALCOLM MUNRO & ASSOCIATES • LANDSCAPE ARCHITECTS
ROGER HOBBS • VIDEO HISTORIES





 ACTON WEST BASIN • CANBERRA
 CULTURAL HERITAGE STUDY • AUGUST 1993
 SEQUENTIAL PLAN 5
 NCDC DEVELOPMENT: 1970 • 1979
 FREEMAN COLLETT & PARTNERS PTY LTD • ARCHITECTS & PLANNERS
 MALCOLM MUNRO & ASSOCIATES • LANDSCAPE ARCHITECTS
 ROGER HOBS • VIVID HISTORIES



Lake Burley Griffin

West Basin

Springbank Is.



National Capital Planning Authority

ACTON PENINSULA - WEST BASIN

Scale 1:2000



ACTON/WEST BASIN • CANBERRA
CULTURAL HERITAGE STUDY • AUGUST 1993

SEQUENTIAL PLAN 6
NCDC • NCPA: 1980 • Present

FREEMAN COLLETT & PARTNERS PTY LTD • ARCHITECTS & PLANNERS
MALCOLM MUNRO & ASSOCIATES • LANDSCAPE ARCHITECTS
ROGER HOBBS • VIVID HISTORIES